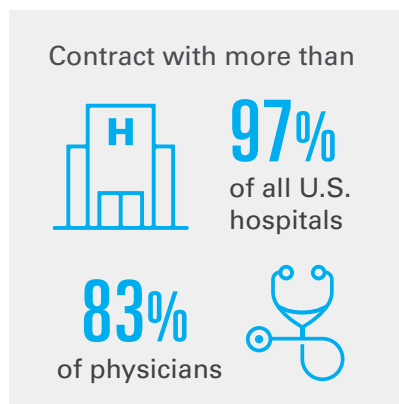
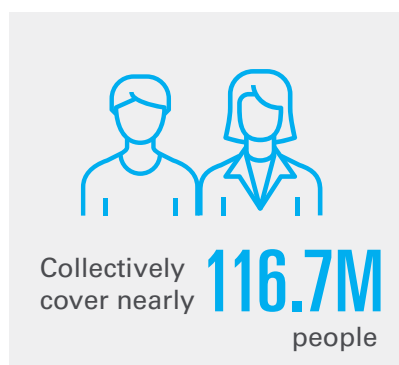




ADVANCING AFFORDABLE AND EQUITABLE HEALTH CARE FOR EVERYONE

BCBS COMPANIES...

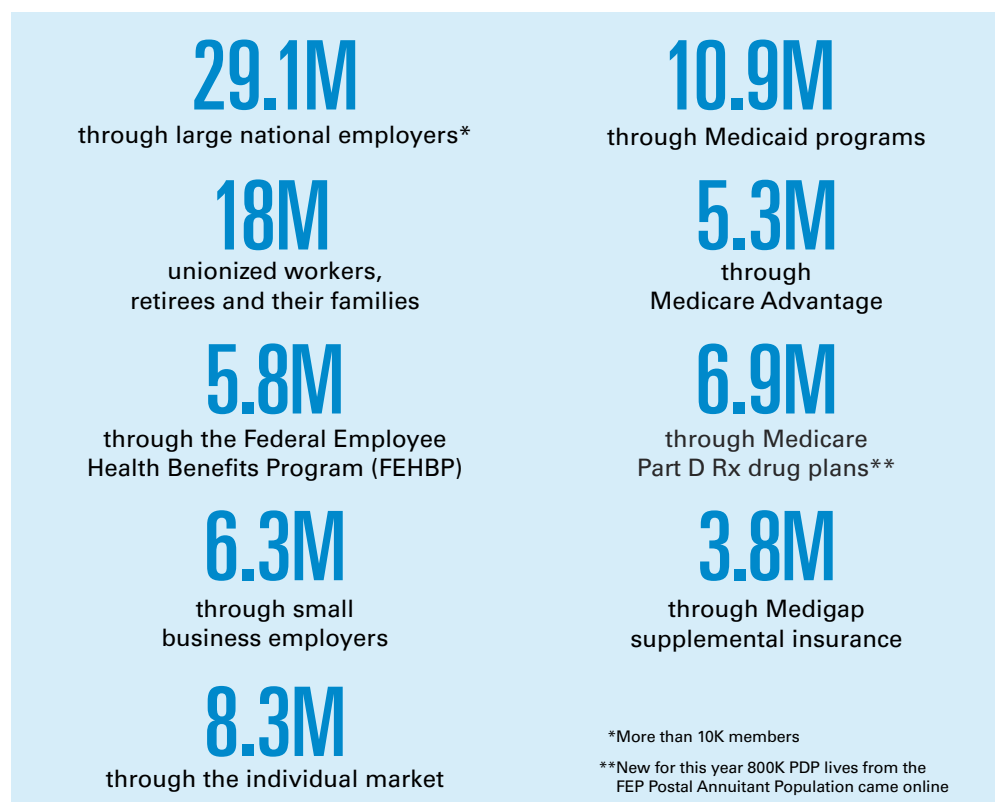


WHO WE ARE

For more than 90 years, Blue Cross and Blue Shield (BCBS) companies have provided quality health care coverage to people in communities across the country. Today, the **independent and locally operated BCBS companies** take what we learn from covering **1 in 3 Americans** and use it to transform our health care system, improve the health and wellness of our local communities, and advance health equity.

WHO WE SERVE

BCBS companies are working to keep health care costs down for everyone regardless of how they get their coverage:



PARTNERING FOR IMPACTFUL CHANGE



an initiative focused on improving affordability and access to costly medical benefit drugs for nearly 100 million Americans.



a partnership in which BCBS companies have provided implicit bias training to more than 5,000 providers, health care professionals and students across nearly 30 states.



a partnership where BCBSA and its member companies are investing more than \$10 million over four years to train over 48,000 staff in more than 5,000 Clubs in trauma-informed practices to better support the emotional and mental well-being of more than 3 million children.



a partnership that will begin manufacturing and distributing insulin with a recommended purchase price of no more than \$30 per vial – a savings of nearly \$400 for uninsured and underinsured individuals.

REIMAGINING HEALTH CARE TO ADVANCE HEALTH EQUITY

People of color are disproportionately impacted by many of the nation's top health conditions. Our National Health Equity Strategy includes:

- Collecting data to measure disparities
- Scaling effective programs
- Working with providers to improve outcomes and address unconscious bias
- Leaning into community partnerships
- Influencing state and federal policy decisions

TRANSFORMING CARE WITH DATA-DRIVEN SOLUTIONS

By drawing on our robust data from covering 1 in 3 Americans, BCBS companies are uniquely positioned to provide insights on health care quality and cost at the local, regional and national levels.

A network that includes more than **97%** of U.S. hospitals & **83%** of physicians

An estimated **\$610 BILLION** in annual claims nationally

More than **87 MILLION** BCBS members across 50 states, and Washington, D.C., have access to value-based care from more than **716,000** providers

INVESTING IN LOCAL COMMUNITIES

Through corporate giving and foundation investments, BCBS companies create programs and support community partnerships that have a great impact on the health and well-being of our local communities – driving more equitable care for all Americans.



Investing more than **\$500 MILLION** in community health initiatives



DONATING \$25 MILLION to improve behavioral health care



GIVING \$19 MILLION to improve maternal health



PROVIDING \$18 MILLION to address youth mental health

AREAS OF COMMUNITY INVESTMENT

- Access to Care and Coverage
- Health Care System Quality & Affordability
- Social Determinants of Health
- Wellness, Disease Prevention and Management

