

# How valuable is value-based care?

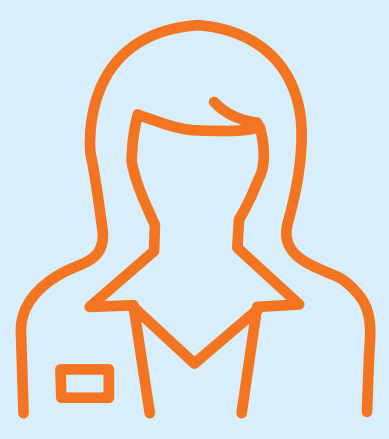
## ASSESSING ITS EFFECTIVENESS TODAY & OVER TIME



Value-based care is at the foundation of a transformational shift in how healthcare is delivered and paid for, with a stronger focus on overall healthcare vs. sick care. Realizing the full scope of its benefits and the many ways it will positively impact your employees and your organization will take time.

### It's important to view value-based care as a journey.

#### OVER TIME, YOUR EMPLOYEES MAY EXPERIENCE:



Stronger relationships with doctors who better coordinate and help manage their total health



Greater focus on prevention and wellness



Better management of chronic conditions



Fewer unnecessary procedures and treatments



Lower duplication of tests



Fewer avoidable hospital admissions and emergency department visits

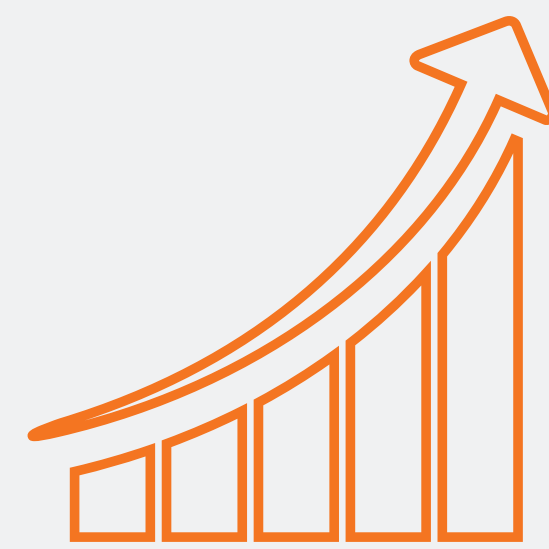
#### WHICH CAN DRIVE:

- **Better** overall employee health
- **Lower** direct and indirect costs for your company and employees
- **Improved** employee productivity and presenteeism
- **Increased** employee engagement and satisfaction with their healthcare

#### REMEMBER, RESULTS WILL CONTINUALLY IMPROVE AS:



More providers enter value-based care programs



Value-based care programs mature and evolve



More members see value-based care providers

#### PLUS, EARLY RESULTS ARE PROMISING:

14% ↓

fewer emergency department visits

3% ↓

lower hospital readmission rates

35+% ↓

decrease in aggregate cost trend in some cases, compared to national averages

8% ↑

better comprehensive diabetes care

7% ↑

better breast cancer screening rates

Blue Cross and Blue Shield (BCBS) companies' Analysis, Total Care Evaluation 4.0 – National Aggregate Results, February 2019; performance denotes Total Care designated providers versus non-Total Care providers, calendar year 2017, includes data from 11.5 million BCBS members attributed to Total Care providers. Emergency room visit results represent rates per 1,000. Comprehensive diabetes results represent better nephropathy screening rates, in addition to other diabetes measurement.

### Have questions about value-based care?

Blue Cross and Blue Shield companies are here to help you get the most value from these programs.

Learn more at [smarterbetterhealthcare.com](http://smarterbetterhealthcare.com)

